



**train***easy*  
e-learning solutions for business

# LMS-~~X~~

SERVICE DEFINITION



# About Traineasy

Traineasy is a long-established and trusted supplier of e-learning solutions to the public and private sectors. Our services range from bespoke content development to LMS-X, our flagship LMS, which is available with a fully integrated Career Track module. Our customers include the airline Virgin Australia, the Environment Agency, and a number of NHS Trusts.

## Our Vision

Empowering individuals and organisations across the UK and beyond, our vision is to revolutionise learning through innovative LMS and e-learning solutions. We envision a future where employee training transcends boundaries, where every learner has access to personalised, engaging, and impactful learning experiences. Our commitment is to drive excellence in digital solutions, equipping learners with the skills and knowledge they need to thrive in an ever-evolving world. By harnessing cutting-edge technology and pedagogical expertise, we aspire to be the catalyst for transformation in employee development, fostering a culture of continuous learning and growth. Together with our customers, we aim to shape a brighter future through accessible, adaptable, and inclusive learning solutions.



# Our Customers

Traineasy has been working with a huge variety of customers from very large to smaller, since our inception in 2000 and we understand the varying challenges customers face. Our solutions are deliberately priced to enable customers save money and become more efficient whilst fully supporting their digital learning needs. Our approach has, and continues to be, to put customers at the heart of everything we do. From designing and implementing solutions, to providing customers with support, advice and training, we are always asking and listening to make sure we understand our different customers' situations and requirements, however these might change and evolve over time.



# Why choose Traineasy?



We are experts, specialising in digital learning and skills development solutions, and provide a 'one-stop-shop' for customers supplying a range of services, from LMS-X to bespoke content development, to green skills training, to authoring tools and training on their use.

There are so many reasons customers choose to work with us!



Most of the senior team at Traineasy have worked in an L&D or HR function in a previous role and as such are able to provide great support and advice, particularly around LMS implementation success, and e-learning development. We know how dependent on the quality of the solution employee engagement, learning, development, performance and retention, are, so we will only advise you once we fully understand your specific situation, challenges and requirements.

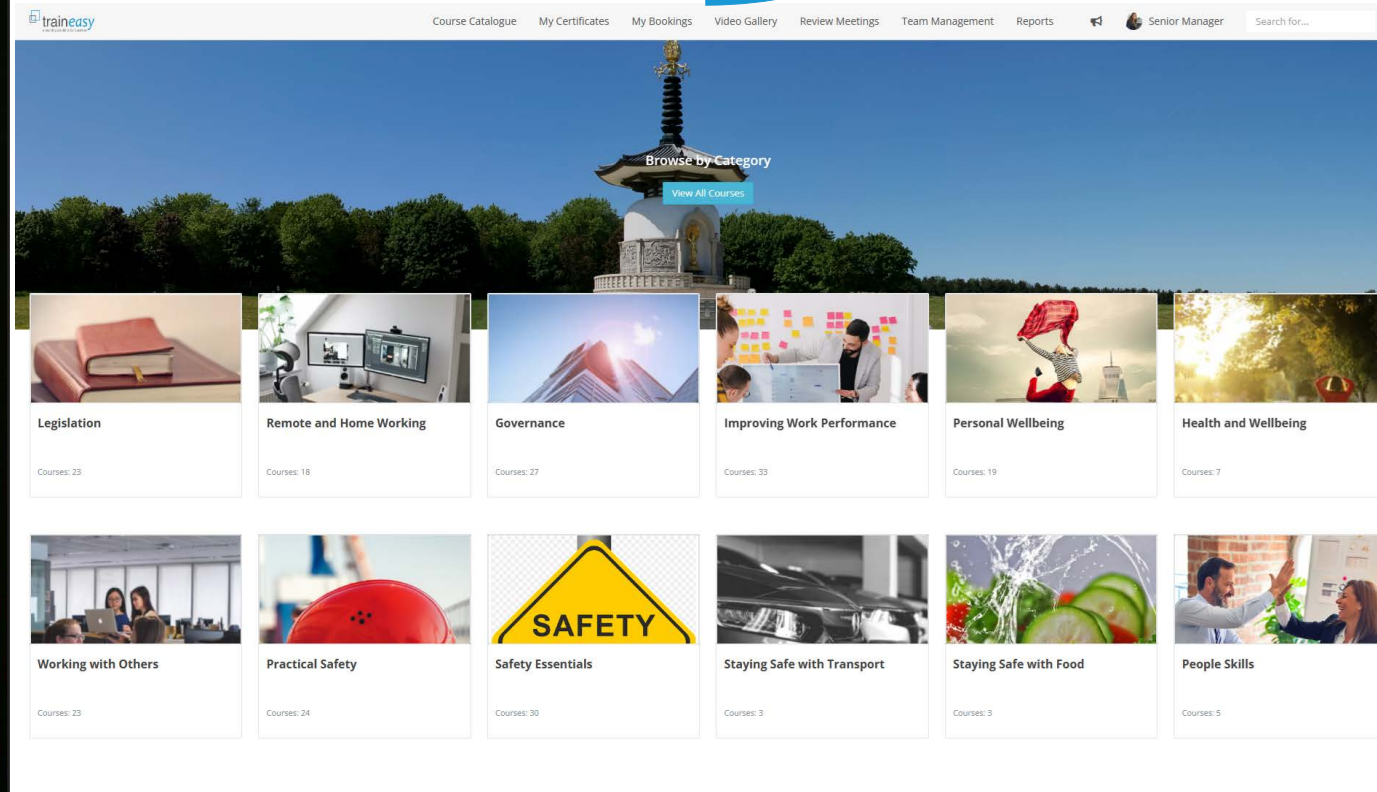


As well as being industry experts, we are friendly! We have great relationships with our customers and the vast majority of them remain with us for a very long time. We are also the developers of - and own - our LMS, and that can be refreshing for customers who are able to influence its roadmap over time.



Finally, we are a UK business with all software developed, maintained and supported by our staff here in Milton Keynes. Our hosting services operate out of ISO27001 UK data centres, and all customer data resides within the UK.





A fully featured LMS with integrated skills management module

Beautiful, engaging bespoke e-learning content development services







Off the shelf content focusing on green skills development

Articulate, Lectora and Cenario VR authoring tools and training on their use

# LMS-X

LMS-X is a modern, feature-rich, robust SCORM-compliant Learning Management System, supporting both digital and instructor-led training. Training compliance management is made easy with powerful, live reporting, and the platform includes a fully integrated Career Track module to drive employee skills development. LMS-X Customers range from SMBs to large NHS Trusts.



Compliance	Compliant	Non Compliant	Total Users	Percentage Compliance
 Data Security Awareness (IG) Information Governance	8281	1341	9622	86%
 Dialog+	1924	1130	3054	62%
 Enhanced Life Support	2029	631	2660	76%
 Equality Diversity & Inclusion	8827	796	9623	91%
 Fire Safety	8235	1379	9614	85%
 Freedom to Speak Up	7678	631	8309	92%

**Traineeasy's LMS-X platform offers the public sector several measurable benefits including reducing costs through automation, for example:**

- ✓ Training compliance email reminders
- ✓ Classroom training signups and booking confirmations
- ✓ Report generation, including live compliance reports
- ✓ Skills profiling and job role matching against skills

## L&D operations are further streamlined by:

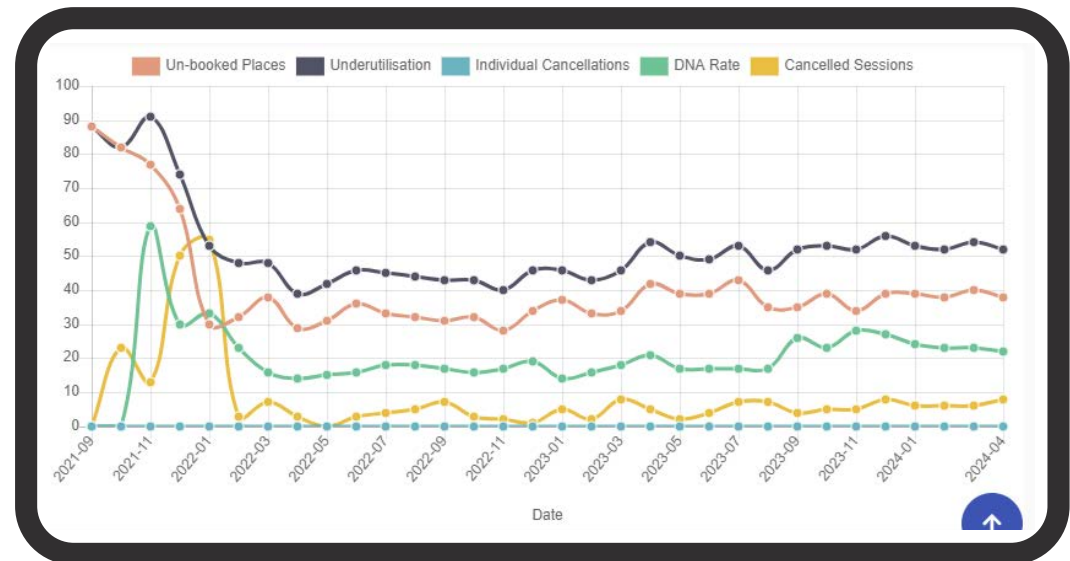
Making learning and development available 24x7x365

Having a single system track and record all forms of staff training

Improving instructor-led training event attendance

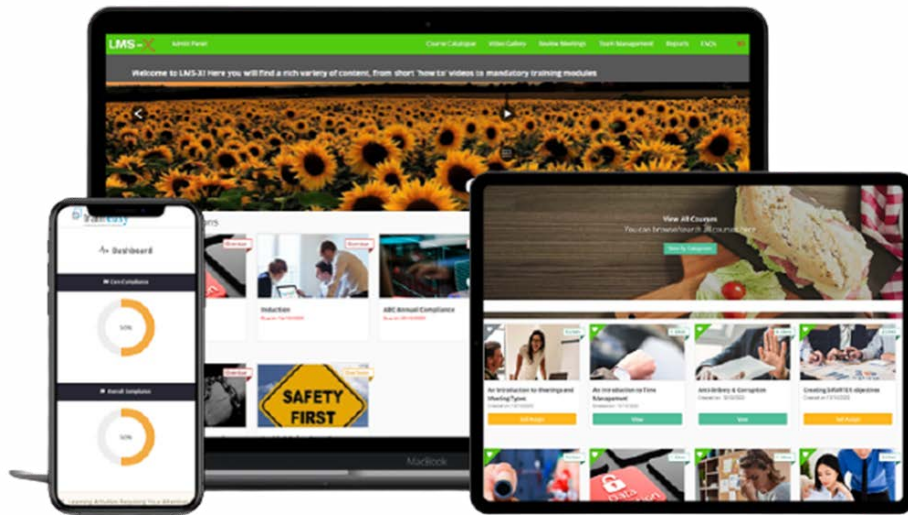
Integration with HR system so LMS and HR data is aligned

Career Track module enables learning management, skills management and succession planning to happen together in one system





# Designed for mobile



LMS-X has been built using a web application development tool, and is therefore designed to be used on hand-held devices with modern browsers installed.

## Nothing to install

LMS-X is Software-as-a-Service (SaaS) so there is no requirement for anything to be installed on the client site, including desktops, laptops, or mobile devices.

## SCORM and AICC Standards

Traineasy is one of the only UK companies to have developed its own SCORM- and AICC-compliant LMS. We are also vastly experienced developers of e-learning content and have used a variety of authoring tools for this purpose, including Articulate 360 and Lectora on both of which we are experts. Suffice to say, our knowledge and understanding of the SCORM standard is second to none.



## Management Information

LMS-X provides rich analytics and powerful reporting, with multiple dashboards providing MI on everything from end user device analytics, to training compliance statistics, to instructor-led training event data; if a customer needs to report on it they can including having reports automatically emailed at a frequency and to recipients of their choice.

## Ease of Use

LMS-X is exceptionally easy to use. Administrators, for example, tell us that user uptake rates and satisfaction levels are very high. Even setting up sophisticated rules for maintaining training compliance couldn't be simpler, a few clicks and the rules are in meaning you have immediate sight of the current (live) training compliance situation.

### Completions so far today (Live Counter)

ILT Activities: **103**

eLearning Activities: **229**

### Total Completions (Last 30 days)

ILT Activities: **3298**

eLearning Activities: **9291**



## HR Integration

LMS-X is kept aligned with HR systems through proven automatic data transfers between the two platforms. Throughout 2024 we will be adding to the ways we can achieve integration - please let us know which HRIS you use and we'll advise how to best synchronise with LMS-X.

## Video Gallery

LMS-X features a video gallery that allows customers to curate their own playlists of videos by connecting to them from YouTube and/or Vimeo. Super simple to use, whole playlists and channels of videos can be linked to LMS-X in just a few clicks. Once videos are in the gallery, they can either remain as a valuable, on demand resource for learners, or added to courses, where their completion is tracked, and may even contribute towards training compliance.



## Career Track

- ✓ A complete solution for supporting staff development
- ✓ Fully integrated with LMS-X
- ✓ Role matching and competency selection supports staff in working towards their next career move
- ✓ Staff development plans support the uploading of evidence to show completion of learning activities
- ✓ Reviewers digitally record meetings, both scheduled and interim
- ✓ Superb reporting enables the tracking of individual and organisational progress, risk areas, and where there are strengths, to better support training interventions and succession planning respectively
- ✓ Keeps staff engaged with their development

# Contact us



+44 (0)1908 508777

[sales@traineasy.com](mailto:sales@traineasy.com)

[www.traineasy.com](http://www.traineasy.com)

Studio D2, Witan Studios, 334 Witan Gate West,  
Milton Keynes, MK9 1EJ



